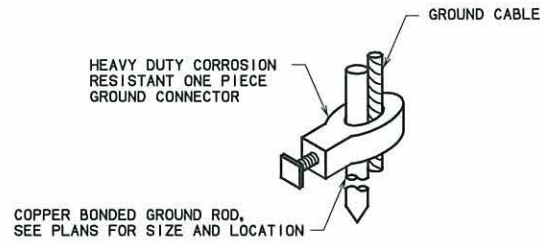


TYPICAL QUICK DISCONNECT "Y" FUSED CONNECTORS



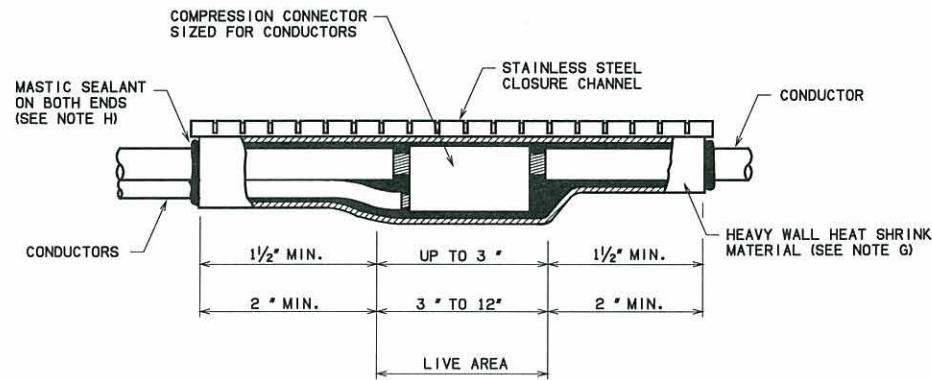
TYPICAL GROUND ROD AND CONNECTOR

MATERIAL SPECIFICATIONS

- (A) GROUND RODS SHALL BE UL LISTED AND/OR R.E.A. APPROVED.
- (B) CONDUCTORS SHALL BE IN ACCORDANCE WITH SECTION 811 OF THE 2009 STANDARD SPECIFICATIONS.
- (C) ALL CONDUCTOR SPLICES SHALL BE MADE WITH PROPERLY SIZED COMPRESSION TYPE CONNECTORS, UNLESS OTHERWISE SPECIFIED. CONNECTORS SHALL BE COMPATIBLE WITH THE CONDUCTOR MATERIAL AND INSTALLED IN ACCORDANCE WITH THE MANUFACTURER'S RECOMMENDATIONS. *WIRE NUT/SPRING CONNECTORS* ARE NOT ACCEPTABLE CONNECTORS TO BE USED AS A SPLICING DEVICE.
- (D) ALL IN LINE AND QUICK/BREAKAWAY DISCONNECT FUSED *Y* HOLDERS SHALL BE WATERPROOF, RATED AT 600 VOLTS, 30 AMPS AND CAPABLE OF HOLDING A KTK TYPE FUSE (1/32" X 1-1/2" FUSE). FUSED HOLDERS MANUFACTURED BY BUSSMANN MANUFACTURING OR HOMAC MFG. CO. OR OTHER APPROVED EQUAL MAY BE USED.
- (E) FUSES SHALL BE CURRENT-LIMITING TYPE, PREFERABLY BUSSMANN MANUFACTURING MODEL KTK, SIZED AS SPECIFIED IN THE PLANS.
- (F) LINE/LOAD CONDUCTORS SPLICES AND FUSE HOLDERS CONNECTIONS SHALL BE INSULATED AND MADE WATERPROOF.
- (G) CROSS LINKED POLYOLEFIN HEAT SHRINK COMPOSITION MATERIAL WITH A HOT-MELT ADHESIVE THICKNESS OF AT LEAST 0.06", APPROVED FOR DIRECT BURIAL TO 600V/90 DEG. CELCIUS IN ACCORDANCE WITH ANSI C19.1-1986 (LATEST REVISION).
- (H) MASTIC SEALANT SHALL BE NON-CORROSIVE AND IN ACCORDANCE WITH ASTM D-2671.

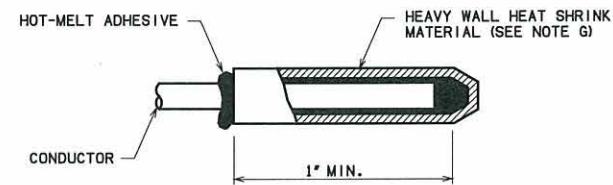
GENERAL NOTES

- 1. ALL INSTALLERS OF HEAT SHRINK MATERIALS SHALL BE TRAINED AND CERTIFIED BY THE MANUFACTURER OF THE MATERIAL. A COPY OF THIS CERTIFICATION SHALL BE FURNISHED TO THE ENGINEER, IF REQUESTED.
- 2. CONNECTORS ATTACHED TO THE GROUND ROD BY THE GROUND ROD MANUFACTURER MAY BE ACCEPTED.
- 3. AN APPROVED QUICK DISCONNECTED FUSED *Y* CONNECTOR SHALL BE INSTALLED ON THE LINE SIDE CONDUCTOR OF EACH HIGHWAY LIGHT POLE AND OVERHEAD SIGN STRUCTURE EQUIPPED WITH SIGN LIGHTS. THESE CONNECTORS SHALL BE INSTALLED AT THE HANDHOLE LOCATED AT THE BASE OF THE STRUCTURE OR AT THE LOCATION SHOWN ON THE PLANS.
- 4. A BRANCH CIRCUIT TAP MAY BE USED WITH EITHER A "MADE-UP" OR AN APPROVED MANUFACTURED CONNECTOR KIT. FUSING MAY OR MAY NOT BE REQUIRED. SEE THE PLANS FOR LOCATIONS AND FUSE SIZE.
- 5. ALL HEAT SHRINK DIMENSIONS ARE BASED ON FINAL INSTALLED CONDITION.
- 6. FUSED *Y* CONNECTORS SHALL BE APPROVED BY THE ENGINEER AND INSTALLED AT EACH POLE BASE OR BRANCH CIRCUIT AS REQUIRED. THE COST OF THESE CONNECTORS SHALL BE INCLUDED IN THE UNIT PRICE BID FOR THE INSULATED CABLES.

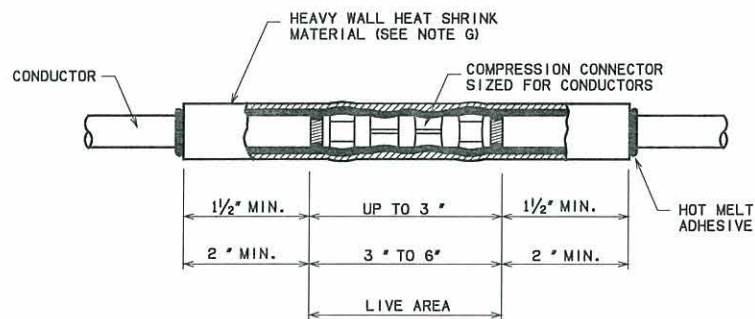


TYPICAL CONDUCTOR TAP AND/OR SPLICE WITH HEAT SHRINK WRAP AROUND SLEEVE

(MIN. LENGTH 6" FOR NO. 4 AWG. CONDUCTORS)

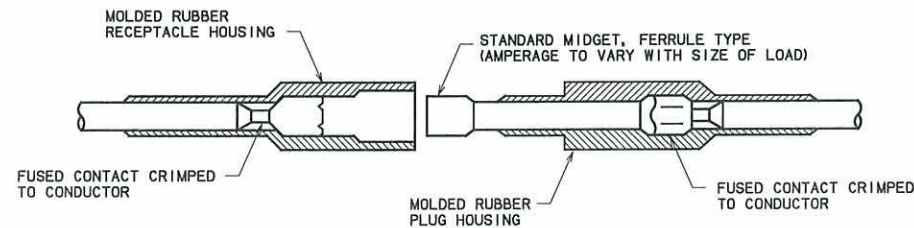


TYPICAL CONDUCTOR END TERMINATION



TYPICAL CONDUCTOR SPLICE WITH HEAT SHRINK SLIP-ON SLEEVE

(MIN. LENGTH 6" FOR NO. 4 AWG. CONDUCTORS)



TYPICAL IN-LINE FUSED HOLDER



APPROVED BY TRAFFIC ENGINEER: *[Signature]* DATE: 8/5/10

TRAFFIC STANDARD

TYPICAL SPLICE AND CONNECTOR DETAILS (FOR ELECTRICAL CONDUCTORS)